

# Disclaimer

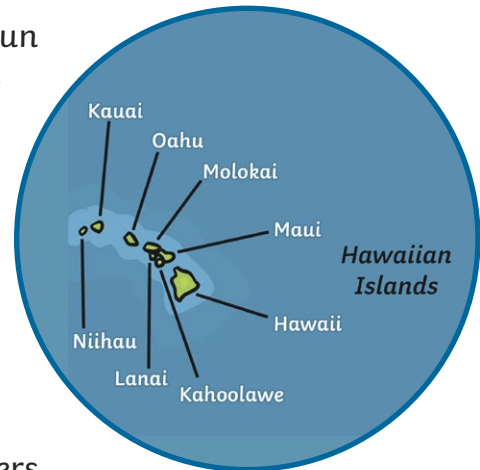
We hope you find the information on our website and resources useful. This resource contains potentially sensitive and/or upsetting topics that may emotionally impact students you use it with due to their past experiences. It is your responsibility to consider whether it is appropriate to use this resource with your students. If you do use this resource, it is your responsibility to ensure that appropriate support is available for anyone affected.

# Pearl Harbour

The attack on Pearl Harbour took place during the Second World War on the island of Oahu in Hawaii which is located in the Pacific Ocean. It was carried out by aircraft of the Japanese Navy who attacked the US Navy on 7th December 1941.

## What Happened before the Attack?

Two years earlier, the Second World War had begun and fighting was extensive throughout Europe and Asia. At this point in time, the United States of America was not part of the war but its navy was based in Hawaii. It is believed that this worried the leaders of the Empire of Japan as they were determined to take control of most of Asia and felt the United States could stand in their way. They were sure a strike from the US Navy would occur soon and so they took matters into their own hands by attacking the US Navy first.



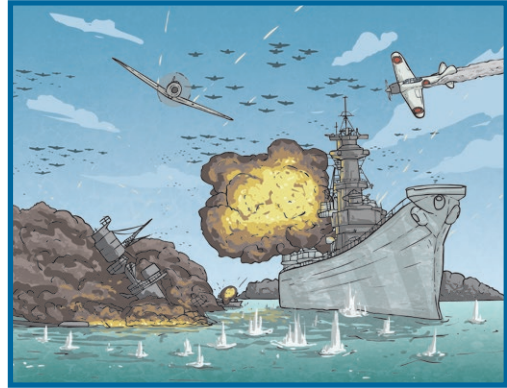
## What Happened during the Attack?

On the morning of Sunday 7<sup>th</sup> December 1941, over 300 Japanese aircraft took to the Hawaiian skies. As they flew over the US warships docked in Pearl Harbour, they dropped bombs, launched torpedoes and fired at the US fighter planes which were still sat outside their hangars. The attack came without warning: many of the US fighter pilots were unable to make it to their aircraft in order to return fire upon the Japanese planes. The attack lasted about two hours and caused the loss of many US Naval vessels, battleships and planes. Sadly, over 1,000 people were injured and over 2,000 American military personnel were killed.

## What Happened after the Attack?

The United States of America had been **semi-neutral** up to this point in the Second World War. However, it could be argued that they had no choice but to get involved after this event; ignoring this attack might have looked like a sign of weakness to the rest of the world. On 8<sup>th</sup> December 1941, the United States of America declared war on Japan. Three days later, this **declaration** of war saw Germany and Italy declare war on the US as Japan's allies in the war. Fortunately for the United States, its aircraft carriers were not positioned at the naval base in the harbour at the time of the attack and its supply facilities were also not hit.

Although they had suffered terrible casualties, this meant that the United States was still in a strong position when it joined the war. In August 1945, Japan's Imperial forces finally surrendered to **Allied** forces after two of their major cities suffered nuclear attacks.



### What Is Pearl Harbour like Today?

The USS Arizona was sunk and destroyed during that day in 1941 with over 1,000 military personnel on board. Today, a memorial stands on the water just above the wreckage of this important US naval ship called the USS Arizona Memorial. It was built in 1962 and can only be reached by boat. It has more than two million visitors every year. These visitors have included nearly every president of the United States of America since President Franklin D Roosevelt who was president at the time of the attack. This memorial is now considered by many as an important US National Historic Landmark.



### Did You Know...?

- The whole attack only lasted for about 110 minutes.
- The Japanese leaders chose Sunday morning to strike as they knew most of the US military personnel would still be sleeping or eating breakfast.
- The Japanese Navy also used submarines in addition to fighter planes when they hit Pearl Harbour.

### Glossary

**Allied:** The 26 nations who fought together as one in the Second World War.

**declaration:** An official public statement about something.

**semi-neutral:** Not completely taking part or giving assistance in a war between others.

**USS Arizona:** A battle ship built for and by the United States Navy.

# Questions

1. What date did the attack happen? Tick one.

- 17<sup>th</sup> December 1941
- 7<sup>th</sup> December 1941
- 7<sup>th</sup> December 1940
- 17<sup>th</sup> December 1942

2. In which state did the attack happen? Tick one.

- Ohio
- Hawaii
- Hiroshima
- Haiti

3. Fill in the missing words.

Two years earlier, the \_\_\_\_\_ World War had begun and fighting was extensive throughout \_\_\_\_\_ and Asia.

4. Name Japan's two allies in the Second World War.

---

5. In which year did the Japanese Imperial forces finally surrender to the Allied forces?

---

6. Explain why the some people believe that the Japanese leaders chose to attack Pearl Harbour.

---

---

---

7. Why do you think a memorial has been built?

---

---

---

8. Why did the Japanese Navy attack on a Sunday?

---

# Answers

1. What date did the attack happen? Tick one.

- 17<sup>th</sup> December 1941
- 7<sup>th</sup> December 1941**
- 7<sup>th</sup> December 1940
- 17<sup>th</sup> December 1942

2. In which state did the attack happen? Tick one.

- Ohio
- Hawaii**
- Hiroshima
- Haiti

3. Fill in the missing words.

Two years earlier, the **Second World War** had begun and fighting was extensive throughout **Europe** and Asia.

4. Name Japan's two allies in the Second World War.

**Japan's allies in the Second World War were Italy and Germany.**

5. In which year did the Japanese Imperial forces finally surrender to the Allied forces?

**Japanese Imperial forces surrendered in 1945.**

6. Explain why some people believe that the Japanese leaders chose to attack Pearl Harbour.

**Pupils' own responses, such as: Some people believe that the Japanese leaders wanted to take control of Asia and they felt that the United States of America were a threat and so tried to get rid of that threat.**

7. Why do you think a memorial has been built?

**Pupils' own responses, such as: I think the memorial has been built to remember and honour the many people who lost their lives that day.**

8. Why did the Japanese Navy attack on a Sunday?

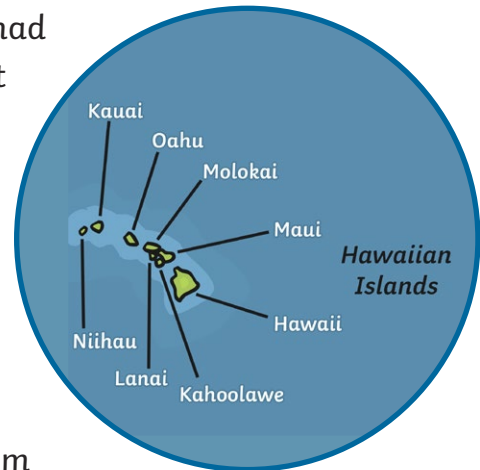
**The Japanese Navy attacked on Sunday because they knew most of the US military personnel would still be sleeping or eating breakfast.**

# Pearl Harbour

The attack on Pearl Harbour occurred during the Second World War on the island of Oahu in Hawaii, which is situated in the Pacific Ocean. It was executed by aircraft of the Japanese Navy who attacked the US Navy on 7th December 1941.

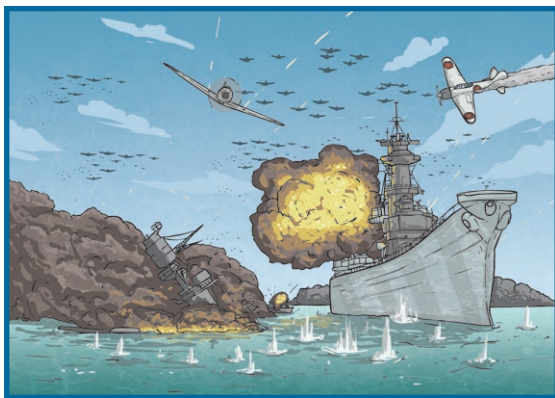
## What Happened before the Attack?

Two years earlier, the Second World War had commenced and fighting was rampant throughout parts of Europe and Asia. At this point in time, the United States of America was not involved in the war but its navy was positioned in Hawaii. It is believed that this was a cause of great irritation to the leaders of the Empire of Japan as they were determined to take control of most of Asia and felt the United States could stand in their way. They were sure a strike from the US Navy would arise and so, taking matters into their own hands, the leaders of the Japanese Imperial forces decided to attack the US Navy first.



## What Happened during the Attack?

On the morning of Sunday 7<sup>th</sup> December 1941, over 300 Japanese aircraft took to the Hawaiian skies. As they flew over the unsuspecting US warships docked



in Pearl Harbour, they released bombs, launched torpedoes and fired at the US fighter planes which were still assembled outside of their hangers. The attack came without warning: many of the US fighter pilots were unable to reach their aircraft in order to return fire upon the Japanese planes. The attack lasted about two hours and caused the loss of many US Naval vessels, battleships and planes.

Regrettably, over 1,000 people were injured and over 2,000 American military personnel were killed.

## What Happened after the Attack?

Many people believe that the United States of America, who had up to this point been semi-neutral during the Second World War, had no choice but to get involved; ignoring this attack might have looked like a sign of weakness to the rest of the world. On 8<sup>th</sup> December 1941, the United States of America declared war on Japan. Three days later, this declaration of war saw Japan's allies, Germany and Italy, declare war on the US. Fortunately for the United States, its aircraft carriers were not sited at the naval base in the harbour at the time of the attack and its supply facilities were also not targeted. This meant that, although they had suffered casualties, the United States was still in a strong position when it entered the war. In August 1945, Japan's Imperial forces finally surrendered to **Allied** forces after two of their major cities (Hiroshima and Nagasaki) endured nuclear attacks.

## What Is Pearl Harbour like Today?

The **USS Arizona** was sunk and destroyed during that day in 1941 with over 1,000 military personnel on board. Today, a memorial stands on the water just above the wreckage of this important US naval ship called the USS Arizona Memorial. It was built in 1962 and can only be reached by boat. It has more than two million visitors every year. These have included nearly every president of the United States of America since President Franklin D Roosevelt who was president at the time of the attack. The memorial is now an important US National Historic Landmark.



## Did You Know...?

- The whole attack only lasted for about 110 minutes.
- It is thought that the Japanese leaders chose Sunday morning to strike as they knew most of the US military personnel would still be sleeping or eating breakfast.
- The Japanese Navy also used submarines in addition to fighter planes when they hit Pearl Harbour.

# Questions

1. Who carried out the attack on Pearl Harbour? Tick one.
  - Germany
  - Italy
  - The Empire of Japan
  - The United States of America
  
2. Order the following statements from 1-5 to show the order they happened. The first one has been done for you.
  - The Japanese forces surrendered.
  - 1** The Second World War started.
  - The USS Arizona Memorial was built.
  - The attack on Pearl Harbour.
  - America declared war against Japan.
  
3. In which body of water is Hawaii located?  

---
  
4. Fill in the missing words from this sentence.

The attack lasted about two \_\_\_\_\_ and caused the loss of many US Naval \_\_\_\_\_, battleships and planes.
  
5. Find and copy a word from the text which shows that the US pilots didn't know the attack was going to happen.  

---
  
6. As they flew over the unsuspecting US warships docked in Pearl Harbour, they released bombs, launched torpedoes and fired at the US fighter planes...  
Why do you think the author used the word unsuspecting in this sentence?  

---



7. Why do you think the USS Arizona memorial has over two million visitors every year?

---

---

---

8. **I think less people would have been injured if the US Navy knew the attack was going to happen.**

Do you agree with this statement? Explain your answer.

---

---

---

9. How do you think the author feels about this attack? Provide evidence from the text to support your answer.

---

---

---

# Answers

- Who carried out the attack on Pearl Harbour? Tick one.
  - Germany
  - Italy
  - The Empire of Japan**
  - The United States of America
- Order the following statements from 1-5 to show the order they happened. The first one has been done for you.
  - 4** The Japanese forces surrendered.
  - 1** The Second World War started.
  - 5** The USS Arizona memorial was built.
  - 2** The attack on Pearl Harbour.
  - 3** America declared war against Japan.
- In which body of water is Hawaii located?  
**Hawaii is located in the Pacific Ocean.**
- Fill in the missing words from this sentence.  
 The attack lasted about two **hours** and caused the loss of many US Naval **vessels**, battleships and planes.
- Find and copy a word from the text which shows that **the US pilots didn't know the attack was going to happen.**  
**unanticipated**
- As they flew over the unsuspecting US warships docked in Pearl Harbour, they released bombs, launched torpedoes and fired at the US fighter planes...  
 Why do you think the author used the word unsuspecting in this sentence?  
**Pupils' own responses, such as: I think that the author has used the word unsuspecting in this sentence to show that the US Navy were unaware of what was about to happen.**
- Why do you think the USS Arizona memorial has over two million visitors every year?  
**Pupils' own responses, such as: I think that the USS Arizona memorial has over two million visitors annually because many people are interested in the past and would want to pay their respects to the brave service personnel who lost their lives on that day.**

8. **I think less people would have been injured if the US Navy knew the attack was going to happen.**

Do you agree with this statement? Explain your answer.

**Pupils' own responses, such as: Yes, I think there would have been less people injured as the US fighter pilots would have been in their aircraft and would have been able to return fire.**

9. How do you think the author feels about this attack? Provide evidence from the text to support your answer.

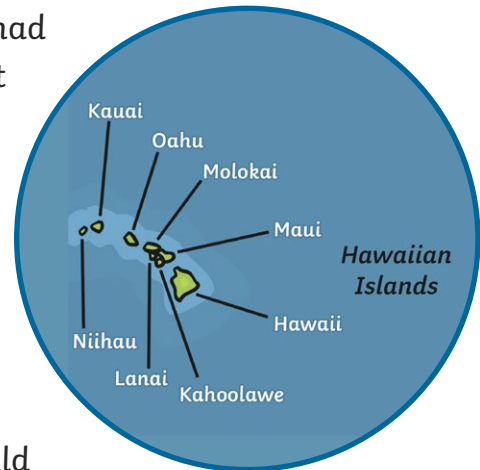
**Pupils' own responses, such as: I think the author feels upset about the attack and that so many people lost their lives as they have used words like regrettably. They also feel it is important to remember those who died on that day as they have told us about the memorial.**

# Pearl Harbour

The attack on Pearl Harbour occurred during the Second World War on the island of Oahu in Hawaii, which is situated in the Pacific Ocean. It was implemented by the aircraft of the Japanese Navy who attacked the US Navy on 7th December 1941.

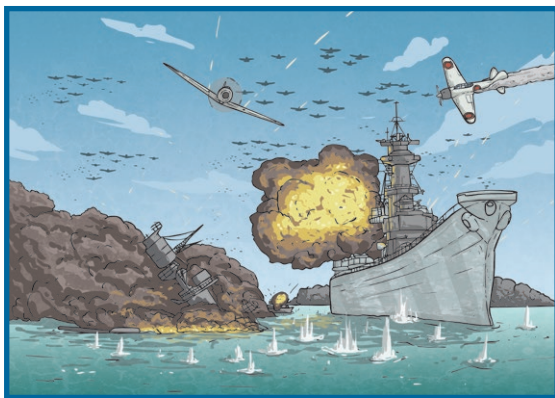
## What Happened before the Attack?

Two years earlier, the Second World War had commenced and fighting was rampant throughout parts of Europe and Asia. At this point in time, the United States of America was not embroiled in the war but its navy was stationed in Hawaii. It is believed that this agitated the leaders of the Empire of Japan as they were determined to dominate most of Asia and felt the United States could jeopardise their plan. The leaders were certain a strike from the US Navy would ensue and so, taking matters into their own hands, they decided to attack the US Navy first.



## What Happened during the Attack?

On the morning of Sunday 7<sup>th</sup> December 1941, over 300 Japanese aircraft took to the Hawaiian skies. As they flew over the oblivious US warships docked in Pearl Harbour, they released bombs, launched torpedoes and fired at the US fighter planes which were still amassed outside of their hangars. The attack was unanticipated: many of the US fighter pilots were incapable of reaching their aircraft in order to return fire upon the Japanese planes. The attack lasted about two hours and caused the loss of many US Naval vessels, battleships and planes. Regrettably, over 1,000 people were injured and over 2,000 American military personnel were killed.



### What Happened after the Attack?

Many people believe that the United States of America, who had up to this point been semi-neutral during the Second World War, had no choice but to get involved; ignoring this attack may have been considered a sign of weakness to the rest of the world. On 8th December 1941, the United States of America declared war on Japan. Three days later, this declaration of war saw Japan's allies, Germany and Italy, declare war on the US. Fortunately for the United States, its aircraft carriers were not sited at the naval base in the harbour at the time of the attack and its supply facilities were also not targeted. This meant that, although they had endured many casualties, the United States was still in a strong position when it entered the war. In August 1945, the Japanese Imperial forces finally surrendered to Allied forces after two of their major cities (Hiroshima and Nagasaki) endured nuclear attacks.

### What Is Pearl Harbour like Today?

The USS Arizona was sunk and devastated during that day in 1941 with over 1,000 military personnel on board. Today, a memorial straddles the wreckage of this important US naval ship called the USS Arizona Memorial. It was built in 1962 and can only be reached by boat. It has more than two million visitors every year, which have included nearly every president of the United States of America, since President Franklin D Roosevelt (who was president at the time of the attack). The memorial is now a significant US National Historic Landmark.



### Did You Know...?

- The whole attack only lasted for about 110 minutes.
- The Japanese leaders chose Sunday morning to strike as they knew most of the US military personnel would still be sleeping or eating breakfast.
- The Japanese Navy also used submarines in addition to fighter planes when they hit Pearl Harbour.

# Questions

1. **It was implemented the aircraft of the Japanese Navy who attacked the US Navy on 7th December 1941.**

What does **implemented** mean? Tick **one**.

- carried out
- rejected
- discussed
- refused

2. Which event occurred last? Tick **one**.

- The attack on Pearl Harbour.
- The start of the Second World War.
- The Japanese Imperial forces surrendered.
- The US declared war against Japan.
- Japan, Germany and Italy declared war against the US.

3. **It is believed that this agitated the leaders the Empire of Japan as they were determined to dominate most of Asia and felt the United States could stand in their way.**

Write a synonym for the word agitated.

---

4. Find and copy **two** things the Japanese aircraft did as they flew over the warships docked in Pearl Harbour.

---

---

5. Find and copy one sentence which shows that the US military had suffered many losses.

---

---

6. Explain why the author has organised this text with questions as subheadings.

---

---

# Questions

7. Summarise what you have read in the second paragraph in one sentence.

---

---

---

8. Why do you think nearly every American president has visited the USS Arizona Memorial?

---

---

---

9. Explain how the outcome of that day might have been changed if the US Navy had learnt about the attack before it happened.

---

---

---

10. Why did the Japanese leaders attack on a Sunday?

---

---

# Answers

1. **It was implemented by the aircraft of the Japanese Navy who attacked the US Navy on 7th December 1941.**

What does **implemented** mean? Tick **one**.

- carried out**
- rejected
- discussed
- refused

2. Which event occurred last? Tick **one**.

- The attack on Pearl Harbour.
- The start of the Second World War.
- The Japanese Imperial forces surrendered.**
- The US declared war against Japan.
- Japan, Germany and Italy declared war against the US.

3. **It is believed that this agitated the leaders of the Empire of Japan as they were determined to dominate most of Asia and felt the United States could stand in their way.**

Write a synonym for the word agitated.

**Accept any synonym of agitated, such as: upset; perturbed; concerned; troubled; anxious; distressed; worried.**

4. Find and copy **two** things the Japanese aircraft did as they flew over the warships docked in Pearl Harbour.

**Accept any two of the following: dropped bombs; launched torpedoes; fired at the US fighter planes.**

5. Find and copy one sentence which shows that the US military had suffered many losses.

**Accept either of the following: This meant that although they had endured many casualties, the United States was still in a strong position when it entered the war; Regrettably, over 1,000 people were injured and over 2,000 American military personnel were killed.**



6. Explain why the author has organised this text with questions as subheadings.  
**Pupils' own responses, such as, such as: The author has used subheading to make the text easier to navigate by clearly outlining you can look for the questions you want answered; To clearly outline what is in each section and the answers it provides.**
7. Summarise what you have read in the second paragraph in one sentence.  
**Pupils' own responses, such as: Even though the US were not involved in the war, the Japanese leaders thought they might attack from Pearl Harbour so attacked first.**
8. Why do you think nearly every American president has visited the USS Arizona memorial?  
**Pupils' own responses, such as: I think nearly every American president has visited the USS Arizona Memorial to pay their respects to the personnel who had served their country.**
9. Explain how the outcome of that day might have been changed if the US Navy had learnt about the attack before it happened.  
**Pupils' own responses, such as: The US Navy would have been more prepared for the attack, had they known about it, and less people might have died.**
10. Why did the Japanese leaders choose to attack on a Sunday?  
**Pupils' own responses, such as: It is believed that the Japanese leaders chose to attack on Sunday because they knew most of the US military personnel would still be sleeping or eating breakfast.**